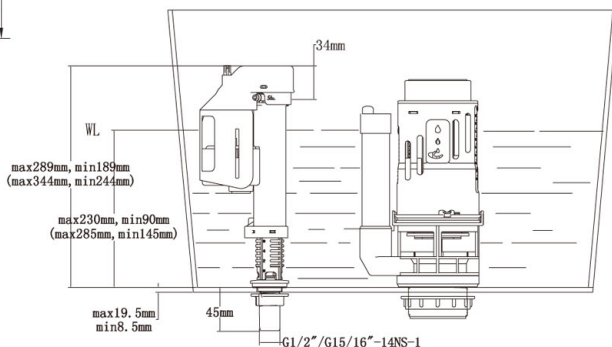
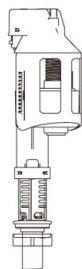
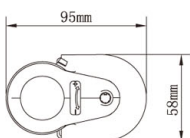


T6800 Fill Valve Installation Instruction



INSTRUCTION

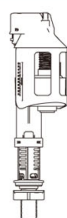
- Please read carefully the following instruction. In order to avoid injuring body or damaging equipment, please install the equipment following the instruction step by step.
- The instructions are complied according to the up-to-date production information. we reserve the rights to make the changes about specifications, packaging and sullying without prior notice.
- When valve installed, the critical level mark on fill valve (identified by a C.L mark on valve body) should be at least 1" (=25.4mm) above top of overflow pipe. This is a plumbing code.
- We shall not be responsible for any failure of using any parts from other companies.
- Water temperature: 2°C-45°C.
- Water pressure: 0.02Mpa-0.8Mpa.

Warning

DO NOT USE OR DROP ANY CHLORINE OR ANY CHEMICAL RELATED COMPONENTS. USE OF SUCH PRODUCTS WILL (1) RESULT IN DAMAGE TO TANK COMPONENTS AND MAY CAUSE FLOODING AND PROPERTY DAMAGE AND (2) VOID WARRANTY. DO NOT OVERTIGHTEN OR TANK/BOWL MAY CRACK.

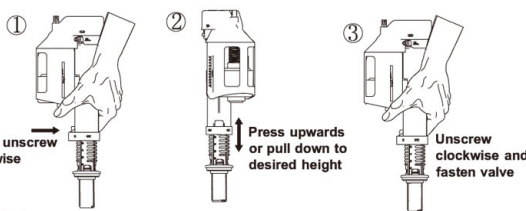
- Preparation: Please remove the worn out fittings and clean your tank when you just install a new one, there might be lots of impurities in your tank, so clean your tank should be the first you do.

2. Water level adjustment



Please check the equipment first and make sure the equipment is no breakage and missing parts

Solution 1



As illustrated

- Press buckle and unscrew;
- Press upwards or pull down to desired height(The water volume will gradually increased when the adjuster is moved upward from the bottom);
- Unscrew and valve body and fasten the buckle.

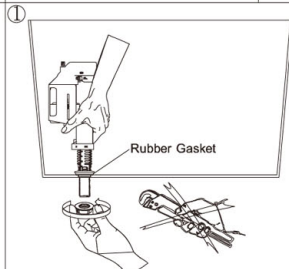
Solution 2



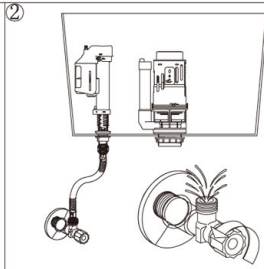
Rotate screw to adjust desired water level

AS illustrated, rotating screw, making the float down or upwards to adjust water level to suitable position (The water volume will gradually increased when the adjuster is moved upward from the bottom.)

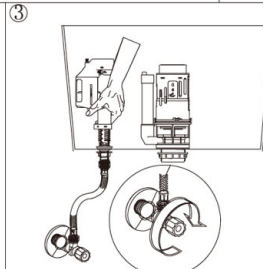
3. Fill Valve Installation



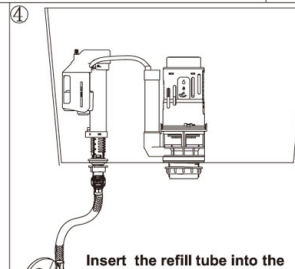
As illustrated, install the valve into tank, and please do not use spanner



Please check angle valve and ensure the water pressure can meet the requirement.

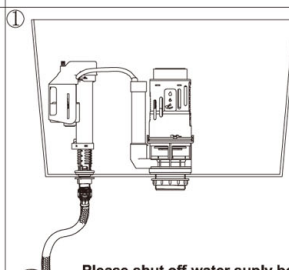


Please turn off the angle valve before adjusting the height of fill valve.

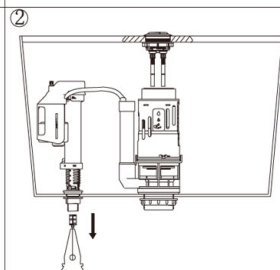


Insert the refill tube into the overflow pipe and make sure that is solid and reliable.

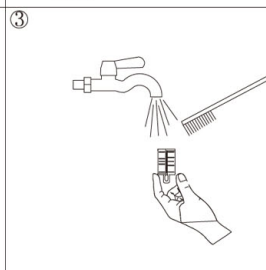
4. Fill Valve Cleaning



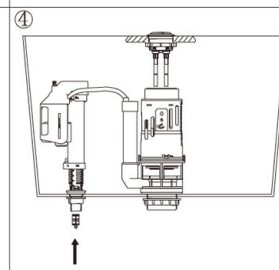
Please shut off water supply before filter cleaning.



As illustrated, take out the filter from inlet by using pliers or hook.



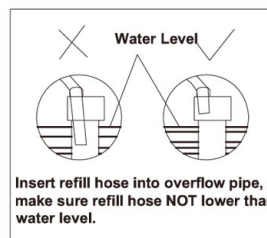
Flush the filter and the adapter.



Install clean filter into inlet and connect the water supply tube as illustrated.

5. Trouble shooting

Trouble	Cause	Trouble shooting Methods
Water level too high or too low	Improper water level adjustment	Adjust the water level
Fill valve fail to shut off or fill the water	<ol style="list-style-type: none"> Inlet valve switch not turned on. Inlet valve float crushed against ceramic wall Filter screen clogged due to dirty water Improper refill hose installation 	<ol style="list-style-type: none"> Turn on inlet valve switch Adjust inlet valve position Clean the filter screen Install refill hose correctly (reference attached picture)



Insert refill hose into overflow pipe, make sure refill hose NOT lower than water level.

Thank you for choosing our products. If there is any question, please contact the local distributor and they will give you satisfactory response